

PANAX RED CL-304

Revision date: 03/2015

Revision No.: 3

PRODUCT DESCRIPTION

Opaque, good flow properties

Color Index	Pigment Red 53:1	
C.I. No.	15585:1	
Chemical Type	Beta-Naphthol pigment, Ba	
CAS No.	5160-02-1	
EINECS No.	225-935-3	

PHYSICAL DATA

Appearance	Red powder	
pH (2% aqueous)	7-9	ISO 787-9
Specific gravity	1,8 g/cm ³	ISO 787-10
Bulk volume	740 cm ³ /100 g	ISO 787-11
Oil absorption	30 g/100 g	ISO 787-5

FASTNESS PROPERTIES

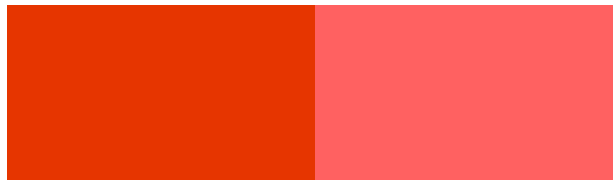
Acid	4	ISO 787-4
Alkali	3	ISO 787-4
Water	5	ISO 2836
Ethanol	3	ISO 2836
Xylene	4	ISO 2836
MEK	3	ISO 2836
DOP	5	ISO 2836
Heat / 150°C, 10 min	5	ISO 787-21
Heat/ 210°C, 10 min	3	ISO 787-21
Light 1/3 SD	4	ISO 105-B01
Light 1/25 SD	3	ISO 105-B01

STANDARD PACKAGING

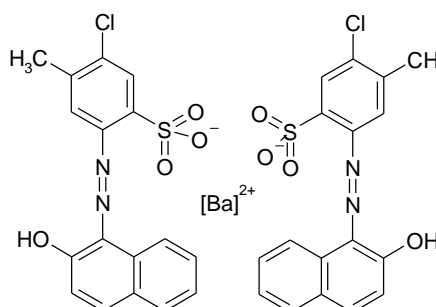
Paper bags	10 kg net
Big Bags type C	200 kg net

FULL SHADE

REDUCTION 1:25 TiO₂



CHEMICAL STRUCTURE OF THE PIGMENT


Molecular formular C₃₄H₂₄BaCl₂N₄O₈S₂
Molecular Mass 888,9 g/mol

APPLICATION RECOMMENDATION

Publication gravure	-
Water base flexo	recommended
Offset	recommended
Paint (Oil Base)	-
Paint (Water Base)	-
Plastics	recommended

REGULATORY COMPLIANCE

German BfR IX	-
AP(89)1	-
FDA 21 CFR 178.3297	-
CONEG, EC 94/62	-
ROHS 2002/95/EC, 2005/618/EC	-

Our product specific end application information are based upon our current knowledge. They are presented without any representation or warranty concerning the suitability, performance or correctness of the product for a particular application or use. Significant variations can occur between test results and results obtained in actual use. We strongly advise that the customer test the product in the specific intended application under conditions expected during use.

HEAD-OFFICE

174, Gaejwa Ro, GEUMJEONG-GU
609-845 BUSAN, KOREA
Tel.: +82 51 523 1515
Fax: +82 51 523 7272
Email: trade@ukseung.co.kr
http://www.ukseung.co.kr

EUROPE OFFICE

UK SEUNG Europe GmbH
Hauptstrasse 14
D-63860 Rothenbuch, Germany
Tel. : +49 6094 9897426
Fax: +49 6094 9897427
Email: info@ukseung-europe.de
http://www.ukseung-europe.de