

PANAX RED B

Revision date: 03/2015

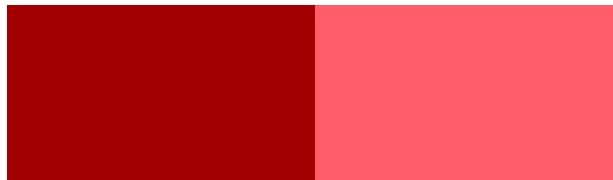
Revision No.: 3

PRODUCT DESCRIPTION

Blue shade	
Color Index	Pigment Red 3
C.I. No.	12120
Chemical Type	Beta-Naphthol pigment
CAS No.	2425-85-6
EINECS No.	219-372-2

FULL SHADE

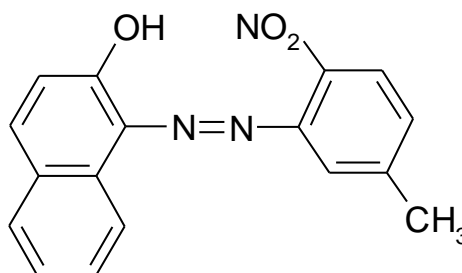
REDUCTION 1:25 TiO₂



PHYSICAL DATA

Appearance	Red powder	
pH (2% aqueous)	5-8	ISO 787-9
Specific gravity	1,4 g/cm ³	ISO 787-10
Bulk volume	810 cm ³ /100 g	ISO 787-11
Oil absorption	36 g/100 g	ISO 787-5

CHEMICAL STRUCTURE OF THE PIGMENT


Molecular formular C₁₇H₁₃N₃O₃
Molecular Mass 307,3 g/mol

FASTNESS PROPERTIES

Acid	5	ISO 787-4
Alkali	4	ISO 787-4
Water	5	ISO 2836
Ethanol	2	ISO 2836
Xylene	3	ISO 2836
MEK	1	ISO 2836
DOP	3	ISO 2836
Heat / 150°C, 10 min	4	ISO 787-21
Heat/ 210°C, 10 min	3	ISO 787-21
Light 1/3 SD	7	ISO 105-B01
Light 1/25 SD	4	ISO 105-B01

APPLICATION RECOMMENDATION

Publication gravure	-
Water base flexo	-
Offset	-
Paint (Oil Base)	recommended
Paint (Water Base)	-
Plastics	-

REGULATORY COMPLIANCE

German BfR IX	-
AP(89)1	-
FDA 21 CFR 178.3297	-
CONEG, EC 94/62	-
ROHS 2002/95/EC, 2005/618/EC	-

STANDARD PACKAGING

Paper bags	10 kg net
Big Bags type C	On request

Our product specific end application information are based upon our current knowledge. They are presented without any representation or warranty concerning the suitability, performance or correctness of the product for a particular application or use. Significant variations can occur between test results and results obtained in actual use. We strongly advise that the customer test the product in the specific intended application under conditions expected during use.

HEAD-OFFICE

174, Gaejwa Ro, GEUMJEONG-GU
609-845 BUSAN, KOREA
Tel.: +82 51 523 1515
Fax: +82 51 523 7272
Email: trade@ukseung.co.kr
http://www.ukseung.co.kr

HEAD-OFFICE

174, Gaejwa Ro, GEUMJEONG-GU
609-845 BUSAN, KOREA
Tel.: +82 51 523 1515
Fax: +82 51 523 7272
Email: trade@ukseung.co.kr
http://www.ukseung.co.kr

EUROPE OFFICE

UK SEUNG E
Hauptstrasse
D-63860 Roth
Tel. : +49 609
Fax: +49 609
Email: info@u
http://www.uk