

**PANAX RED 1030**

Revision date: 03/2011

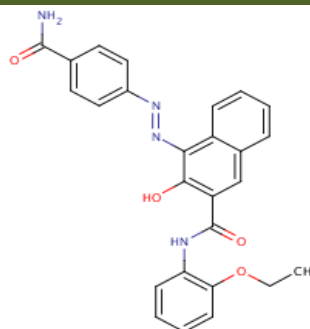
Revision No.: 3

PRODUCT DESCRIPTION

Color Index	Pigment Red 170
C.I. No.	12475
Chemical Type	Naphthol AS
CAS No.	2786-76-7
EINECS No.	220-509-3

FULL SHADE**REDUCTION 1:25 TiO₂****PHYSICAL DATA**

Appearance	Red powder	
pH (2% aqueous)	6-8	ISO 787-9
Specific gravity	1,4 g/cm ³	ISO 787-10
Bulk volume	300 cm ³ /100 g	ISO 787-11
Oil absorption	26 g/100 g	ISO 787-5

CHEMICAL STRUCTURE OF THE PIGMENT**FASTNESS PROPERTIES**

Acid	5	ISO 787-4
Alkali	5	ISO 787-4
Water	5	ISO 2836
Ethanol	5	ISO 2836
Xylene	4	ISO 2836
MEK	4	ISO 2836
DOP	3	ISO 2836
Heat / 150°C, 10 min	5	ISO 787-21
Heat/ 210°C, 10 min	3	ISO 787-21
Light 1/3 SD	7	ISO 105-B01
Light 1/25 SD	6	ISO 105-B01

Molecular formulae**Molecular Mass** 455 g/mol**APPLICATION RECOMMENDATION**

Publication gravure	-
Water base flexo	-
Offset	-
Paint (Oil Base)	recommended
Paint (Water Base)	-
Plastics	-

REGULATORY COMPLIANCE**German BfR IX**

AP(89)1

FDA 21 CFR 178.3297

CONEG, EC 94/62

ROHS 2002/95/EC, 2005/618/EC

STANDARD PACKAGING

Paper bags	10 kg net
Big Bags type C	-

Our product specific end application information are based upon our current knowledge. They are presented without any representation or warranty concerning the suitability, performance or correctness of the product for a particular application or use. Significant variations can occur between test results and results obtained in actual use. We strongly advise that the customer test the product in the specific intended application under conditions expected during use.

HEAD-OFFICE

174, Gaejwa Ro, GEUMJEONG-GU
609-845 BUSAN, KOREA
Tel.: +82 51 523 1515
Fax: +82 51 523 7272
Email: trade@ukseung.co.kr
http://www.ukseung.co.kr

EUROPE OFFICE

UK SEUNG Europe GmbH
Hauptstrasse 14
D-63860 Rothenbuch, Germany
Tel. : +49 6094 9897426
Fax: +49 6094 9897427
Email: info@ukseung-europe.de
http://www.ukseung-europe.de