

## PANAX YELLOW GF-967 S

Revision Date: 14.03.2015 Revision No.: 1

### PRODUCT DESCRIPTION

Half-transparent, cost efficient, amine below 100 ppm

<b>Color Index</b>	Pigment Yellow 13
<b>C.I. No.</b>	21100
<b>Chemical Type</b>	Diarylide Yellow pigment
<b>CAS No.</b>	5102-83-0
<b>EINECS No.</b>	225-822-9
<b>REACH Reg. Nr.:</b>	01-2119475451-39-0010

### PHYSICAL DATA

<b>Appearance</b>	Yellow powder	
<b>pH (2% aqueous)</b>	6-8	ISO 787-9
<b>Specific gravity</b>	1,4 g/cm <sup>3</sup>	ISO 787-10
<b>Bulk volume</b>	590 cm <sup>3</sup> /100 g	ISO 787-11
<b>Oil absorption</b>	33 g/100 g	ISO 787-5

### FASTNESS PROPERTIES

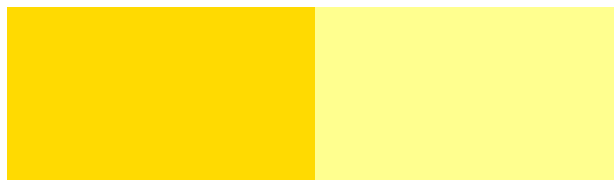
<b>Acid</b>	5	ISO 787-4
<b>Alkali</b>	5	ISO 787-4
<b>Water</b>	5	ISO 2836
<b>Ethanol</b>	4	ISO 2836
<b>Xylene</b>	4	ISO 2836
<b>MEK</b>	4	ISO 2836
<b>DOP</b>	4	ISO 2836
<b>Heat / 150°C, 10 min</b>	4	ISO 787-21
<b>Heat/ 210°C, 10 min</b>	3	ISO 787-21
<b>Light 1/3 SD</b>	5	ISO 105-B01
<b>Light 1/25 SD</b>	3	ISO 105-B01

### STANDARD PACKAGING

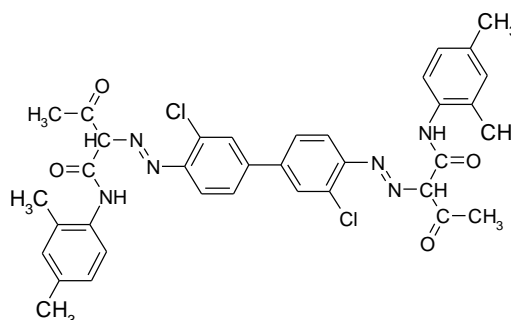
<b>Paper bags</b>	10 kg net
<b>Big Bags type C</b>	300 kg net

### FULL SHADE

### REDUCTION 1:25 TiO<sub>2</sub>



### CHEMICAL STRUCTURE OF THE PIGMENT


**Molecular formulae** C<sub>36</sub>H<sub>34</sub>Cl<sub>2</sub>N<sub>6</sub>O<sub>4</sub>
**Molecular Mass** 685,6 g/mol

### APPLICATION RECOMMENDATION

<b>Publication gravure</b>	-
<b>Water base flexo</b>	recommended
<b>Offset</b>	-
<b>Paint (Oil-Base)</b>	-
<b>Paint (Water-Base)</b>	-
<b>Textile</b>	-

### REGULATORY COMPLIANCE

<b>German BfR IX</b>	compliant
<b>AP(89)1</b>	compliant
<b>FDA 21 CFR 178.3297</b>	not listed
<b>CONEG, EC 94/62</b>	compliant
<b>ROHS 2002/95/E, 2005/618/EC</b>	compliant

Our product specific end application information are based upon our current knowledge. They are presented without any representation or warranty concerning the suitability, performance or correctness of the product for a particular application or use. Significant variations can occur between test results and results obtained in actual use. We strongly advise that the customer test the product in the specific intended application under conditions expected during use.

#### HEAD-OFFICE

174, Gaejwa Ro, GEUMJEONG-GU  
609-845 BUSAN, KOREA  
Tel.: +82 51 523 1515  
Fax: +82 51 523 7272  
Email: trade@ukseung.co.kr  
http://www.ukseung.co.kr

#### EUROPE OFFICE

UK SEUNG Europe GmbH  
Hauptstrasse 14  
D-63860 Rothenbuch, Germany  
Tel. : +49 6094 9897426  
Fax: +49 6094 9897427  
Email: info@ukseung-europe.de  
http://www.ukseung-europe.de