

PANAX YELLOW GF-935 F

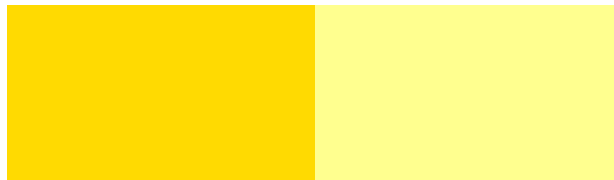
Revision Date: 14.03.2015 Revision No.: 3

PRODUCT DESCRIPTION

Opaque, easy dispersing, good flow	
Color Index	Pigment Yellow 12
C.I. No.	21090
Chemical Type	Diarylide Yellow pigment
CAS No.	6358-85-6
EINECS No.	228-787-8

FULL SHADE

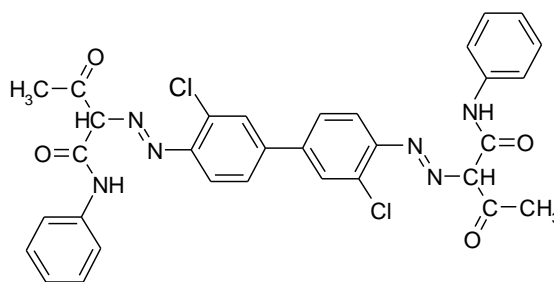
REDUCTION 1:25 TiO₂



PHYSICAL DATA

Appearance	Yellow powder	
pH (2% aqueous)	6-8	ISO 787-9
Specific gravity	1,4 g/cm ³	ISO 787-10
Bulk volume	630 cm ³ /100 g	ISO 787-11
Oil absorption	33 g/100 g	ISO 787-5

CHEMICAL STRUCTURE OF THE PIGMENT



Molecular formulae C₃₂H₂₆Cl₂N₆O₄

Molecular Mass 629,5 g/mol

FASTNESS PROPERTIES

Acid	5	ISO 787-4
Alkali	5	ISO 787-4
Water	5	ISO 2836
Ethanol	4	ISO 2836
Xylene	4	ISO 2836
MEK	5	ISO 2836
DOP	4	ISO 2836
Heat / 150°C, 10 min	4	ISO 787-21
Heat/ 210°C, 10 min	3	ISO 787-21
Light 1/3 SD	4	ISO 105-B01
Light 1/25 SD	3	ISO 105-B01

APPLICATION RECOMMENDATION

Publication gravure	-
Water base flexo	recommended
Offset	-
Paint (Oil-Base)	-
Paint (Water-Base)	-
Plastics	-

STANDARD PACKAGING

Paper bags	10 kg net
Big Bags type C	250 kg net

REGULATORY COMPLIANCE

German BfR IX	compliant
AP(89)1	compliant
FDA 21 CFR 178.3297	not listed
CONEG, EC 94/62	compliant
ROHS 2002/95/E, 2005/618/EC	compliant

Our product specific end application information are based upon our current knowledge. They are presented without any representation or warranty concerning the suitability, performance or correctness of the product for a particular application or use. Significant variations can occur between test results and results obtained in actual use. We strongly advise that the customer test the product in the specific intended application under conditions expected during use.

HEAD-OFFICE

174, Gaejwa Ro, GEUMJEONG-GU
609-845 BUSAN, KOREA
Tel.: +82 51 523 1515
Fax: +82 51 523 7272
Email: trade@ukseung.co.kr
http://www.ukseung.co.kr

EUROPE OFFICE

UK SEUNG Europe GmbH
Hauptstrasse 14
D-63860 Rothenbuch, Germany
Tel. : +49 6094 9897426
Fax: +49 6094 9897427
Email: info@ukseung-europe.de
http://www.ukseung-europe.de