

PANAX RED 1010W

Revision date: 03/2015

Revision No.: 3

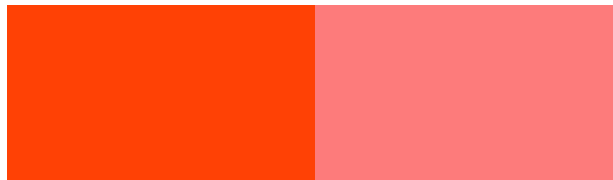
PRODUCT DESCRIPTION

Low PCB, low amine

Color Index	Pigment Red 2
C.I. No.	12310
Chemical Type	Naphthol AS-pigment
CAS No.	6041-94-7
EINECS No.	227-930-1

FULL SHADE

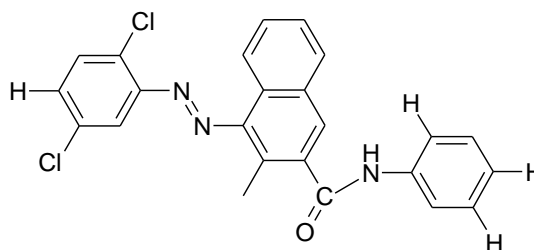
REDUCTION 1:25 TiO₂



PHYSICAL DATA

Appearance	Red powder	
pH (2% aqueous)	6-8	ISO 787-9
Specific gravity	1,6 g/cm ³	ISO 787-10
Bulk volume	420 cm ³ /100 g	ISO 787-11
Oil absorption	33 g/100 g	ISO 787-5

CHEMICAL STRUCTURE OF THE PIGMENT



FASTNESS PROPERTIES

Acid	5	ISO 787-4
Alkali	4	ISO 787-4
Water	5	ISO 2836
Ethanol	2	ISO 2836
Xylene	2	ISO 2836
MEK	1	ISO 2836
DOP	2	ISO 2836
Heat / 150°C, 10 min	5	ISO 787-21
Heat/ 210°C, 10 min	2	ISO 787-21
Light 1/3 SD	7	ISO 105-B01
Light 1/25 SD	5	ISO 105-B01

Molecular formular C₂₃H₁₅Cl₂N₃O₂
Molecular Mass 436,3 g/mol

APPLICATION RECOMMENDATION

Publication gravure	-
Water base flexo	recommended
Offset	-
Paint (Oil Base)	-
Paint (Water Base)	-
Textile	recommended

REGULATORY COMPLIANCE

German BfR IX	compliant
AP(89)1	compliant
FDA 21 CFR 178.3297	-
CONEG, EC 94/62	compliant
ROHS 2002/95/EC, 2005/618/EC	compliant

STANDARD PACKAGING

Paper bags	10 kg net
Big Bags type C	On request

Our product specific end application information are based upon our current knowledge. They are presented without any representation or warranty concerning the suitability, performance or correctness of the product for a particular application or use. Significant variations can occur between test results and results obtained in actual use. We strongly advise that the customer test the product in the specific intended application under conditions expected during use.

HEAD-OFFICE

174, Gaejwa Ro, GEUMJEONG-GU
609-845 BUSAN, KOREA
Tel.: +82 51 523 1515
Fax: +82 51 523 7272
Email: trade@ukseung.co.kr
http://www.ukseung.co.kr

EUROPE OFFICE

UK SEUNG Europe GmbH
Hauptstrasse 14
D-63860 Rothenbuch, Germany
Tel. : +49 6094 9897426
Fax: +49 6094 9897427
Email: info@ukseung-europe.de
http://www.ukseung-europe.de